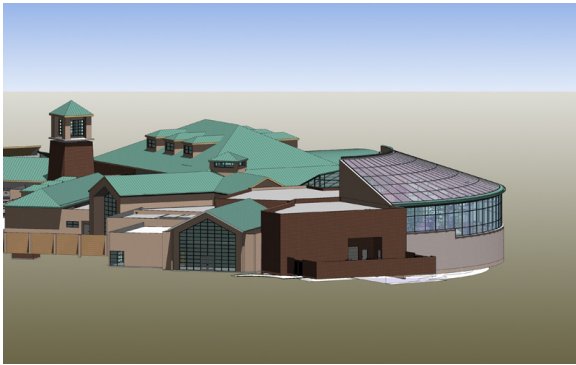
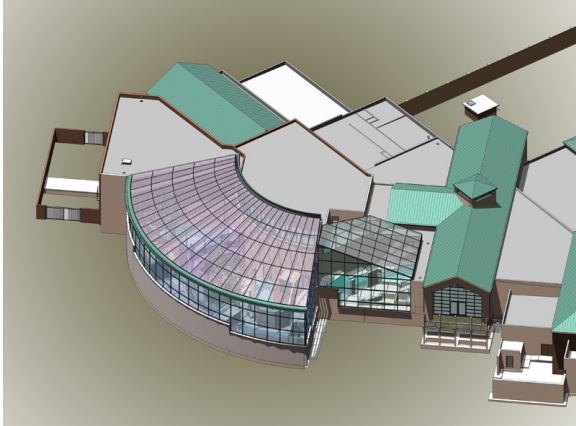


The Aquarium at the Albuquerque Biological Park Phase II

Albuquerque, New Mexico



Renderings courtesy of Van H. Gilbert Architects

Project Statistics

Area:	28,370 SF
Completion Date:	2011
Estimated Construction Cost:	\$13.8 Million

Certified LEED Silver

Alvine Aquatics provided life support engineering design for a new addition to this award-winning aquarium. Alvine Aquatics' engineering scope included the pumping, filtration, disinfection and controls for the animals' water systems of the aquarium.

The exhibits feature both salt and fresh water reclamation. The filtered water is used for irrigation at the zoo and dust control. The building has wide open areas for easy access to the life support equipment. All of the piping in the shark and reef exhibits is hidden under the floor panels for a more natural environment.

Several new aquatic exhibits are incorporated, including:

Great Barrier Reef	152,349 gallons
Shark Lagoon	40,724 gallons
Tuna	18,191 gallons
Crocodile	17,131 gallons
Mangrove	3,137 gallons
Sea Dragons	2,367 gallons
Live Coral	936 gallons
Sea Horses	861 gallons

River otter and flying fox will also have new habitats.

